

OPTIONS CATALOG



STONE CANYON
H O M E S

JANUARY 2023

11061 AL-129 Brilliant, AL 35548

866-978-4272

info@stonecanyonhomes.com

STONE CANYON HOMES

Stone Canyon Homes is a luxury tiny home builder located in Brilliant, AL. We use the best materials and designers when building our tiny houses, so you can rest assured that your home will last for many great memories to come.

Our brand's staple is the leading level of service we provide our Buyers. Each of our clients is as important as the next, and we strive to deliver nothing less than world-class support from start to finish. Every tiny home is designed to capitalize on space and efficiency while adhering to the highest standards of construction.



Note: All products are subject to change due to availability. Products may be exchanged for products of equal or greater value. Information is constantly being updated due to a steadily changing market. For the most updated information, contact your sales representative. All selections made outside of this product guide are subject to evaluation for price, availability and additional lead time.

Stone Canyon Homes.....	2
General Product Information.....	4
Frame.....	6
Insulation.....	7
Linoleum.....	8
Carpet.....	9
Decking.....	10
Porch Railing.....	11
Porch.....	12
Metal Roof.....	14
Roof.....	15
Exterior Columns.....	17
Exterior siding	
Prefinished LP Smart Lap Siding.....	18
Hardie Board.....	19
Board & Bottom	20
Board & Bottom w/ Lap Siding.....	20
Walls & Ceiling.....	21
Trim.....	22
Interior Door.....	23
Exterior Door.....	26
Windows.....	28
Loft Rails.....	29
Loft Stairs.....	30

Cabinets.....	31
Cabinetry.....	32
Beds.....	35
Countertop.....	37
Sink.....	38
Commodes.....	41
Shower Selection.....	42
Water Heaters.....	44
Air Conditioning.....	45
Appliances.....	46
Electrical Components.....	50
Miscellaneous.....	52
Foundation.....	54



GENERAL PRODUCT INFORMATION

STRUCTURAL / FRAMING MATERIALS

Frame: 10" Steel I-Beam - 6 Axles
10" Steel I-Beam - 4 Axles

Floor System: 2x6

Band Subfloor: ¾" Tongue & Groove OSB

Exterior Walls: 2x4 Wall Studs At 16" O.C.

Interior & Marriage Walls: 2x4 Wall Studs At 16" O.C.

Exterior: Prefinished LP Smart Lap Siding or see options

Wall Heights: 8ft

Typical Roof Pitch: 14' 9" W/Frame
Option: Costume

Int. Door Openings:

Depends on the plan and type of door

Paquet Door 25" – 29"

Swing Door 26"-30"

Insulation : Floor R-11 , Walls: R-13 , Roof: R-19
Other option see specifications.

ELECTRICAL

Distribution Panel: 100 Amp
Option: 200 Amp W/ EeMAX

Conductors: 14 Gauge Wiring For General Circuits, Other Circuits
Sized Accordingly

Smoke Detectors: Per Code/House

Smoke/Carbon Monoxide Detectors: House With Gas Range.

Ceiling Fan Preps: One Each In Living Room
Two Switches (For Fan & Light)

Receptacles/Light Switches: Decora/Rocker Style

Exterior Receptacles: GFCI At Front And Rear Optional/Additional
As Needed For Decks/Porches, Etc.

HVAC: Mitsubishi 9000 BTU Ductless Mini-Split Indoor Air Handler
Bedroom/Living Room

Lighting: Can Light /Per Plan

Kitchen: Can Light Over Kitchen Sink

Led Light under cabinet: Option

Pendant Light : Option



STONE CANYON
H O M E S

PLUMBING

Stand/ Showers: 54"/60" One-Piece Fiberglass/White
Option: Add On Shower Doors, If Selected

Tubs / Showers: 54"/60" One-Piece Fiberglass/White
Option: Add On Shower Doors, If Selected

Toilets: Porcelain/White

Vanity Sink: See Product Specifications, Default: Stainless Steel

Bath Faucets: See Product Specifications, Default: Stainless Steel

Plumbing Supply System: PEX-B

Drain, Waste, And Vent: PVC Water

Heater: Per Plan. 20-Gal Lowboy, Rinnai Gas , EeMAX

APPLIANCES

Appliances: Appliances Wired And Prepped
White and Black standard
Stainless Steel: Options

Fireplace: Option

Fireplace insert to be done on-site

GENERAL PRODUCT INFORMATION

FINISHES & MISCELLANEOUS

Roof: Metal Roof ARP Panel
See catalog For color options

Windows: Vinyl Frame, Double Glazed/ White / No Grid

- 30"x54" Livingroom/ Bedroom
- 30"x27 Kitchen / Loft
- 54"x24" loft Horizontal
- 12" x72 " Transom
- 19"x 40" Bathroom
- 24" x 54" Livingroom

•Exterior Doors:

36" Full View w/Blinds
72" French Door W/Blinds

Ceiling Finish: Tongue & Groove 6"
See color option in Catalog, Color Standard Sealed Natural

Interior Doors: Paquet Door, Swing Door, Barn Door, Bifold Door , See color option in Catalog , Color Standard Sealed Natural

Walls: Tongue & Groove 6"
Color Standar :Sealed Natural

Kitchen/Bath Cabinets: Default: Sealed Natural
Other Options Available - See Product

Vinyl Flooring: Linoleum
See catalog for options

Loft Flooring: Carpet
See catalog for options



STONE CANYON
H O M E S



FRAME

- 10" Steel I-Beam - 4 Axles



- 10" Steel I-Beam - 6 Axles



INSULATION

**Standard*



- R-11 Floor (Double on Alaska Package)



- R-13 Walls 2"X 4"



- "Alaska" Cold Weather Package
**Upgrade*



- R-19 Wall



- R-30 Ceiling



- R-19 Ceiling

LENOLEUM

**Upgrade on Loft*



▪ Shoreline



▪ Oak



▪ Inglewood



Inglewood

*Only use on loft

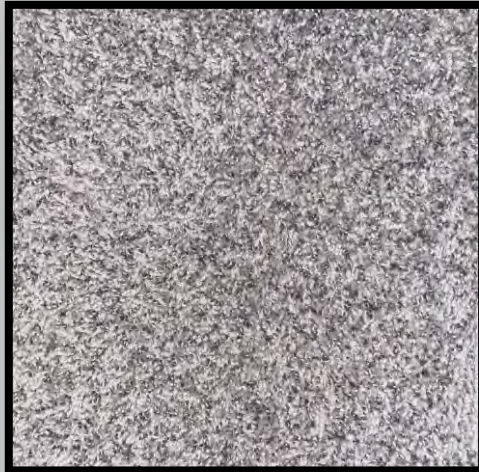
CARPET



- Raw Wood



- Metro Gray



DECKING

Composite Porch Decking



▪ Walnut



▪ Smoke



• Campfire



▪ Natural W/ Stain
(Dark Walnut)

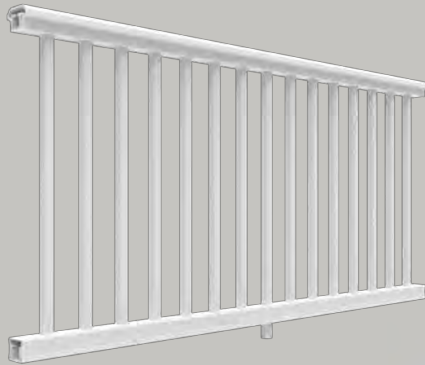


Walnut

PORCH RAILING



- Residential PVC Railing Panels - White
**Standard*



- Horizontal Bar Powder Coated Black w/ wood
**Upgrade*



- Metal Railing Panels Matte Black
**Standard*



**Upgrade*

PORCH



- Additional Porch Deck



- Double Porch Sunroom (Add another room - No RVIA)



**Upgrade*

PORCH

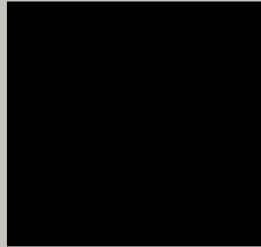


- Second Level "Sky" Deck
W/Spiral Stairs

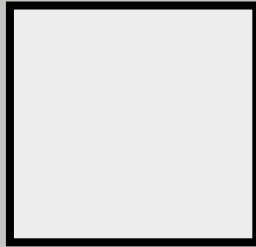


- Porch Knee Wall

METAL ROOF



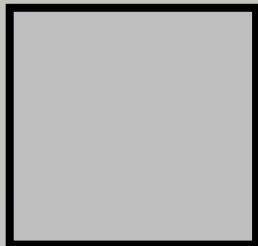
▪ Black



▪ Polar White



▪ Ivey Green



▪ Galvalume



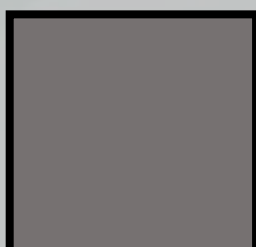
▪ Copper Penny



▪ Bright Red



▪ Hawaiian Blue



▪ Charcoal



▪ Sahara Tan



▪ Galvalume



▪ Copper Penny



▪ Sahara Tan

**Standard No /Loft*

ROOF



M
O
N
O
S
L
O
P
E



▪ Front to back



▪ Side to side



**Example of Roof*

*Standard W/Loft
*Upgrade No/Loft

ROOF



G A B L E

- Open Gable With Crows Foot



*Cedar

- Closed Gable



*Matched with column

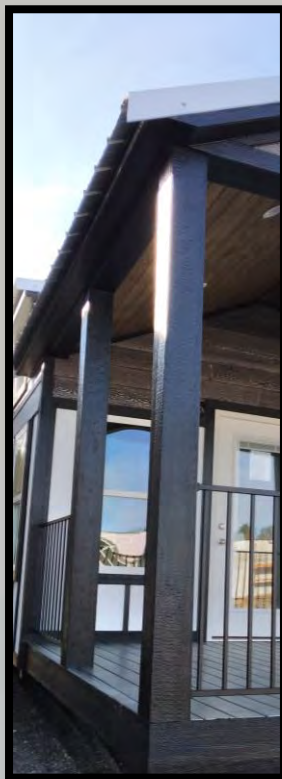


*Matched with siding

EXTERIOR COLUMNS



▪ White



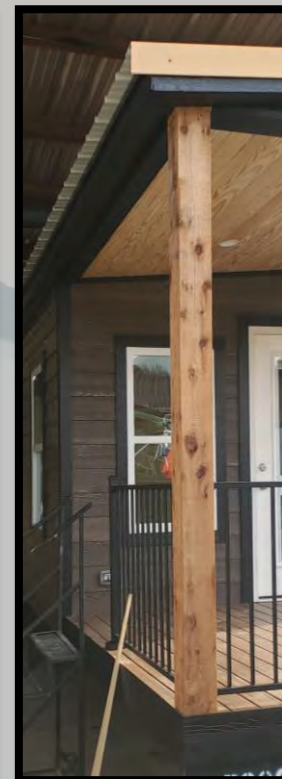
▪ Black



▪ Dark Walnut



▪ Match Siding



▪ Cedar

EXTERIOR SIDING



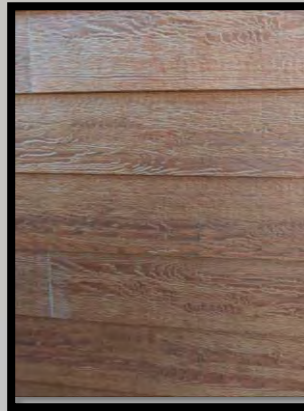
▪ Prefinished LP Smart Lap Siding



▪ Cascade Slate



▪ Summer Wheat



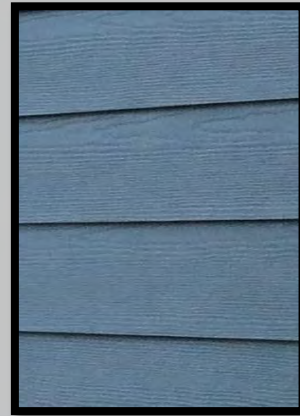
▪ Rosewood



▪ Aspen Ridge



▪ White



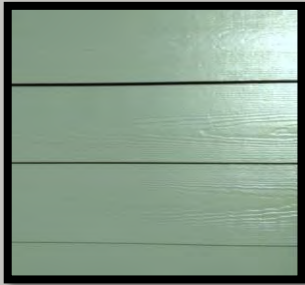
▪ Stone Blue



EXTERIOR SIDING



▪ Hardie Board (Painted)



▪ Mountain Sage

▪ Gray Slate

▪ Boothbay Blue

▪ Evening Blue

▪ Cobblestone



EXTERIOR SIDING



- Board & Batton w/Lap siding



- Black & White / Cascade Slate

- Board & Batton (painted any color)



- Board & Batton / Aspen Ridge

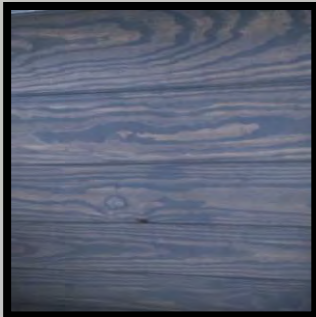
WALLS & CEILING



▪ Sealed Natural



▪ Painted White



▪ Gray wash



▪ Victorian Pewter



▪ White Wash



▪ Dark Walnut



Sealed Natural

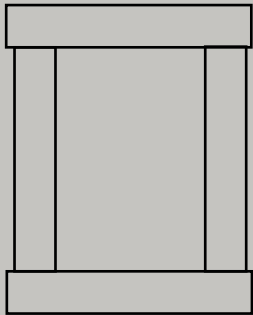


Ceiling/ gray wash
Walls/white wash

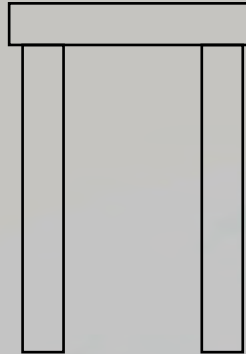
INTERIOR TRIM



- Window 2"



- Door 5"
- Door 2"



- Ceiling 6"
Center



- Walls 2"



* See color option in the walls and cabinet page

* Upgrade

INTERIOR DOORS



- Interior Decorative Barn Door Sliding Hardware Kit in Matte Black



* see color option in the walls and cabinet page

INTERIOR DOORS

- Interior Swing Door 24" – 28"



- Interior Pocket Door 24" – 28"



* See color option in the walls and cabinet page

INTERIOR DOORS

- 48" Bifold Door (Closet)



- Upgraded Door (Closet)



* See color option in the walls and cabinet page

EXTERIOR DOORS

- White Exterior 36" Door Full Glass
W/Enclose Blinds



EXTERIOR DOORS

- White Exterior 72" Door French Door
W/Enclose Blinds
*upgrade

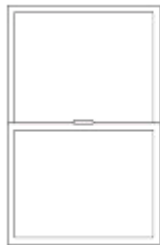


WINDOWS

- Vinyl Frame/ Double Glazed / White / No Grid



- 30"x54" Livingroom/ Bedroom
- 30"x27 Kitchen / Loft
- 54"x24" Loft Horizontal
- 12" x72 " Transom
- 19"x 40" Bathroom
- 24" x 54" Livingroom Vertical



ONE LITE



GRILLE BETWEEN GLASS



30"x27 Kitchen / Loft

54"x24" Horizontal

30"x54" Livingroom/ Bedroom

LOFT RAILING

- Vertical Wood Railing

* see colors option in the walls and cabinet page

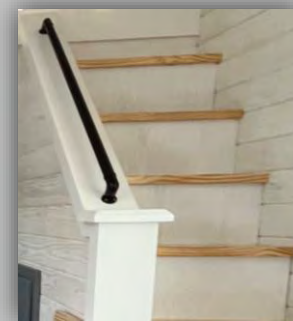
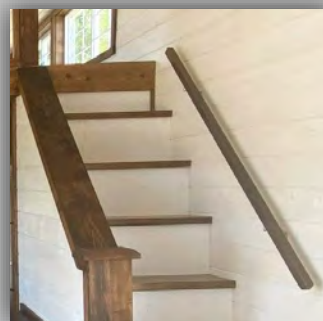


- Horizontal Metal (Matte Black)/ Wood Railing

* see colors option in the walls and cabinet page



- Handrail - Wood and Metal (Black Matte)



LOFT STAIRS



- Stair to loft

* see colors option in the walls and cabinet page

CABINET

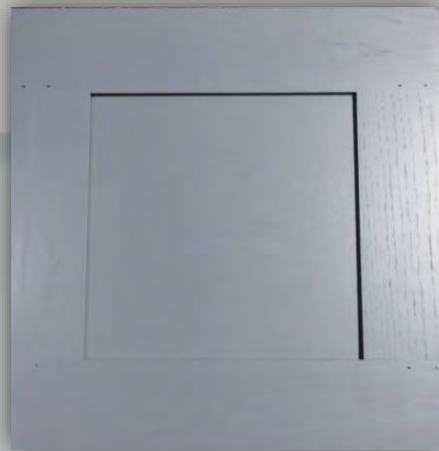
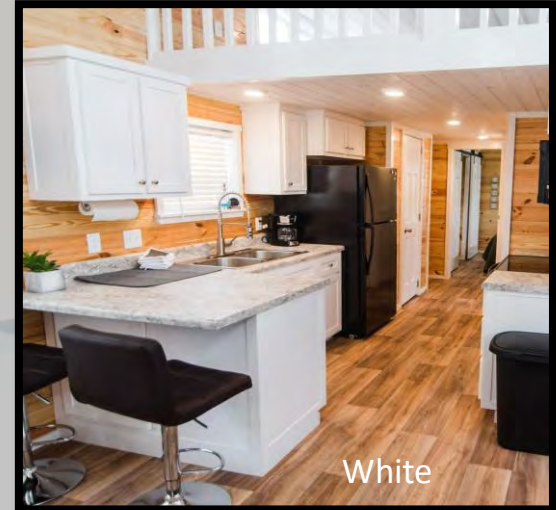
Solid Wood (Bird/Poplar) W/ Soft /Close Hardware



▪ White



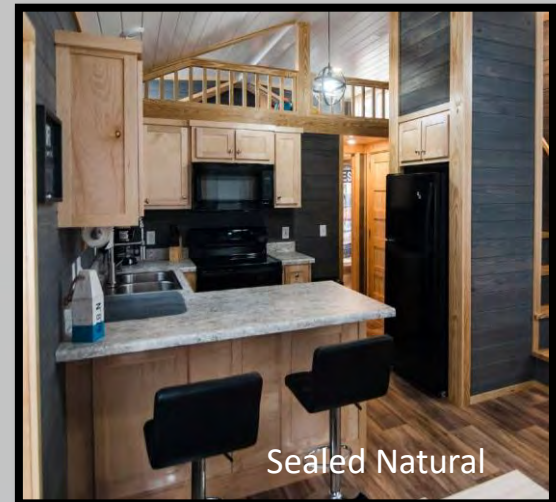
▪ Homestead Oak



▪ Victorian Pewter



▪ Sealed Natural



NOTE: Colors are reproductions and may not portray accurate representation of actual color. Please see sample before making your selection

CABNETRY

Solid Wood (Bird/Poplar) W/ Soft /Close Hardware



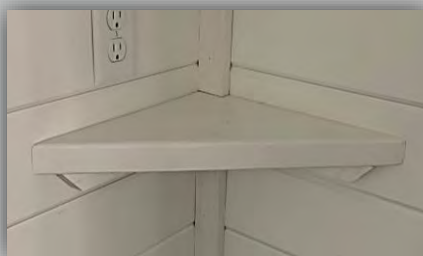
▪ Medicine cab. W/ Mirror



▪ Linen Cabinet



▪ Rustic Shelving



▪ Corner Shelving



▪ Closet Rack

* See color option in the cabinet page

CABNETRY

Solid Wood (Bird/Poplar) W/ Soft /Close Hardware



- Electric fireplace
Cabinetry colors



- Chest
41"x 30"x20"



- Wardrobe
78"x 30"x 21"



* See color option in the
cabinet page



- Nightstand



- Vanity (standard)

- Color same cabinet
* Upgrade

NOTE: Colors are reproductions and may not portray accurate representation of actual color. Please see sample before making your selection

- Pantry (Caney Creek)



- Coffee Bar



* See color option in the cabinet page

* Upgrade

BEDS

Solid Wood (Bird/Poplar)



- Queen or King Bed w/ Storage



* See color option in the cabinet page



- Twin / Full Bunk Bed



- Twin / Twin Bunk Bed



COUNTERTOP

Rolled Edge Formica



- Labrador Granite



- Italian White Di Pesco



COUNTERTOP

Quartz & Granite



- Tranquility White



- Silhouette



SINK

- Kitchen - Faucet

*Standard



- Kitchen - Stainless Steel Double Bowl with Spring Faucet

8IN DEEP DOUBLE BOWL
KITCHEN SINK 20 GAUGE
BRUSHED FINISH



- Kitchen -Spring Faucet



SINK

- Kitchen - Faucet

*Upgrade



- Kitchen - Apron Farm Sink with Spring Faucet (Available in Black, White, & Stainless Steel)



- Kitchen -Spring Faucet



SINK

- Bathroom - Faucet



- Bathroom - Spring Faucet



COMMODES

- Bathroom - Faucet



- Toilet –Two-piece elongated toilet Standard height
*White



SHOWER SELECTIONS



- 54" Fiber Glass Shower Stall
- 60" Fiber Glass Shower Stall (w/seats)



- Shower installed W/ Glass Door

TUB/SHOWER SELECTIONS



- 54" Tub/Shower Fiber Glass/Combo
- 60" Tub/Shower Fiber Glass/Combo



- Shower installed

PLUMBING COMPONENTS

Water Heaters



- Rinnai Tankless GAS Water Heater
100 AMP Power panel



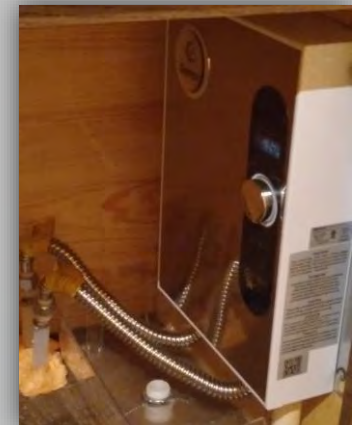
*Upgrade

- 20 Gal Boy Electric Water Heater
100 AMP Power panel



*Standard

- EeMAX Tankless Electric Water Heater
200 AMP Power panel



*Upgrade

AIR ACONDITIONING



- Mitsubishi 9000 BTU
Ductless mini split indoor
Air Handler



- mini split indoor Air Handler



- Connection to house

APPLIANCE



- 18.3 Cu Ft Refrigerator Plumbed for Ice Maker



White/Black
*Standard



Stainless Steel
*Upgrade



APPLIANCES



- 4.8 Cu Ft Smooth Top Electric Range



White
*Standard



Black
*Standard



Stainless Steel
*Upgrade

- 5.0 Cu Ft Gas Range / Propane
*Upgrade



- 1.6 Cu Ft Over Range Microwave
White /Black/*Stainless steel



APPLIANCES

- Kitchen W/Stainless Steel Appliance



- 18" Dishwasher

White, Black , *Stainless Steel



APPLIANCES

- **27" & 24" Washer/Dryer Stack**
3.5 Cu Ft Washer/5.9 Cu Ft Dryer 4 Cycle



ELECTRICAL COMPONENTS

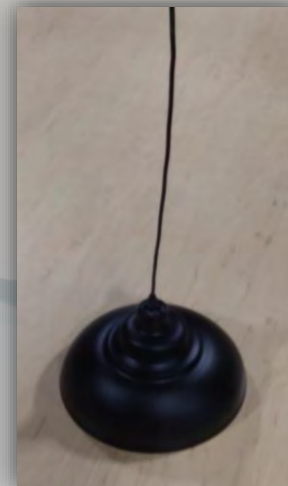
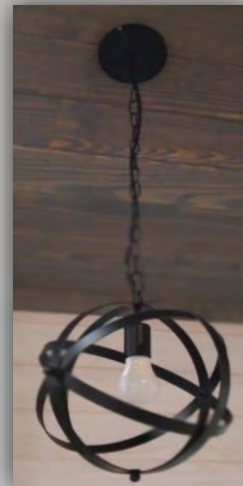
- Lighting



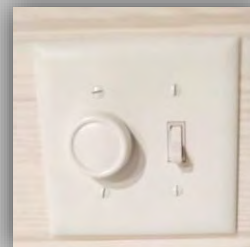
- Can Light



- Pendant Light



- Ceiling Fan W/Light

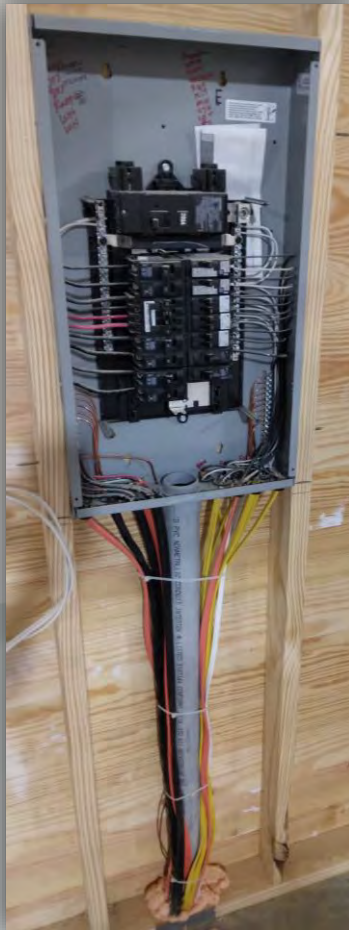


- Light switches control the intensity of light (Fan)

- Light switches

ELECTRICAL COMPONENTS

- Panel box



- 100 AMP Power panel
- 200 AMP Power panel* Upgrade/ W. EeMAX



- Covers panel



- Decorative Covers panel
- * See colors in the walls page

MISCELLANEOUS



- Dryer Vent Option on floor



- Water Heater Access



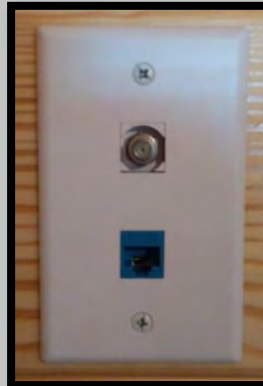
- Stove Outlet



- Dryer Outlet



- Smoke Detector 5"



- TV/Enthernet



- Exterior outlet



- Exterior switch

MISCELLANEOUS



- Plumbing prep. for Ice Maker



- Prep. for Washing Machine



- Valve



- Dryer vent



- Bathroom Vent



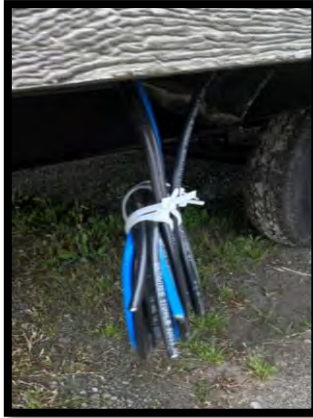
- Vent

SYMBOLLOGY FOR FOUNDATION

Principal connection



TV-Internet



Gas range



Drain Connection



Extra Outlet

Water Inlet

Tie-Down

Main electrical

